



Title

Health-related quality of life trajectory of treatment-naïve patients with Merkel cell carcinoma receiving avelumab



Authors

Murtuza Bharmal, Sandra Nolte, Céleste Lebbé, Laurent Mortier, Andrew S Brohl, Nicola Fazio, Jean-Jacques Grob, Sara Pusceddu, Glenn J Hanna, Jessica C Hassel, Felix Kiecker, Barbara Ellers-Lenz, Marcis Bajars, Gülseren Güzel, Paul Nghiem, Matthias Hunger, Michael Schlichting, Mickaël Henry-Szatkowski & Sandra P D'Angelo



Citation

Future Oncology (2020) doi/10.2217/fo-2020-0426



Compliance rates for the HRQoL data for those still in the study were > 75% for the entire study period

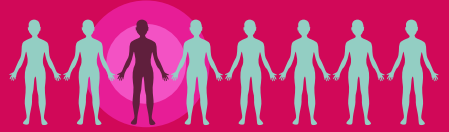
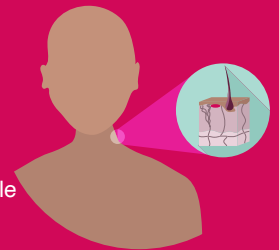
Four FACT-M scores suggested some deterioration related to physical and functional subscales



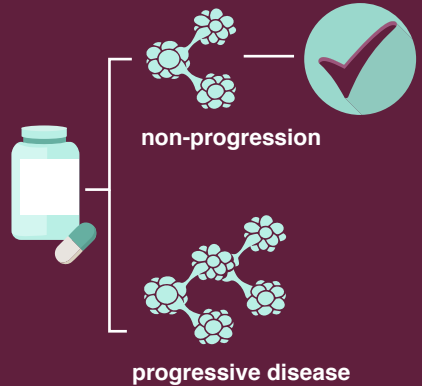
There was evidence for some improvements in emotional well-being and the psychological impact score



This study presents unique longitudinal HRQoL data for treatment-naïve metastatic MCC patients treated with avelumab in a relatively large sample for a rare disease



In treatment-naïve metastatic MCC patients treated with avelumab, non-progression was associated with statistically and clinically meaningful better HRQoL compared with progressive disease



While on avelumab treatment, patients had stable HRQoL for 6 out of the 12 FACT-M/EQ VAS scores considered

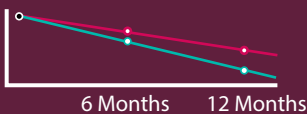


Median QFS, defined as the time until 50% of patients showed definitive deterioration in HRQoL reaching or exceeding the minimal important difference, was longer than median PFS across all FACT-M/EQ VAS scored considered



PFS

QFS



QFS rates, i.e. the % of patients without definitive HRQoL deterioration at 6 and 12 months, were consistently higher than PFS rates

The results of this study in treatment-naïve metastatic MCC patients are consistent with previous findings in patients with chemotherapy-refractory metastatic MCC

Glossary

EQ VAS: EuroQol Visual Analogue Scale; FACT-M: Functional Assessment of Cancer Therapy – Melanoma; HRQoL: Health-related quality of life; MCC: Merkel cell carcinoma; PFS: Progression-free survival; QFS: HRQoL-deterioration-free survival